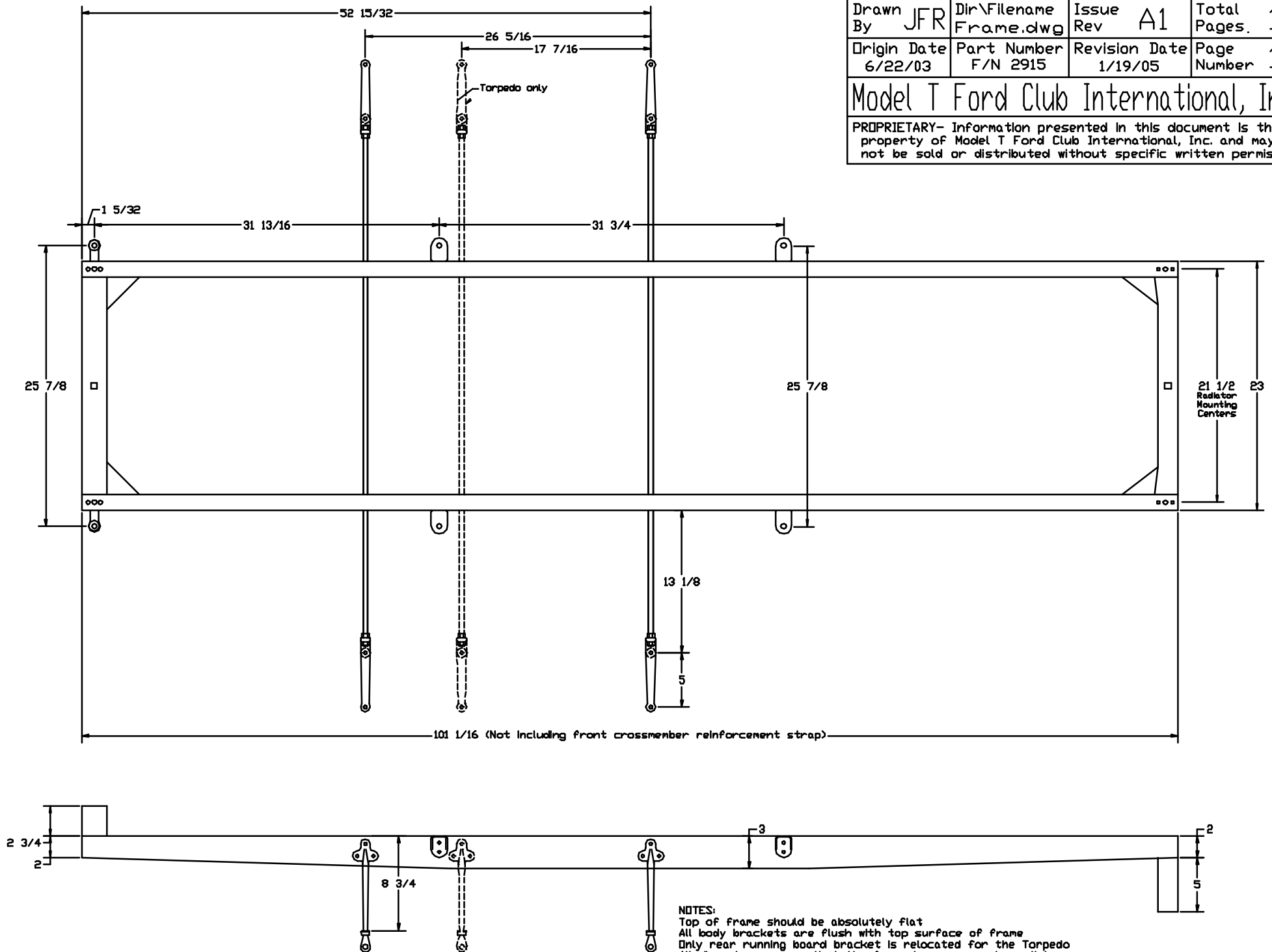


Title	Model T Frame
-------	---------------

Drawn By JFR	Dir\Filename Frame.dwg	Issue Rev A1	Total Pages. 1
Origin Date 6/22/03	Part Number F/N 2915	Revision Date 1/19/05	Page Number 1

Model T Ford Club International, Inc.

PROPRIETARY- Information presented in this document is the property of Model T Ford Club International, Inc. and may not be sold or distributed without specific written permission.



NOTES:

Top of frame should be absolutely flat

All body brackets are flush with top surface of frame

Only rear running board bracket is relocated for the Torpedo

All dimensions assume that the frame is square and parallel

Later frames have different rear body bracket but mounting hole location is unchanged