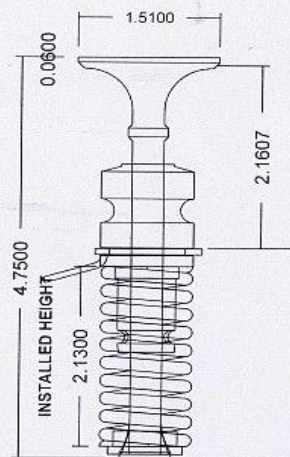


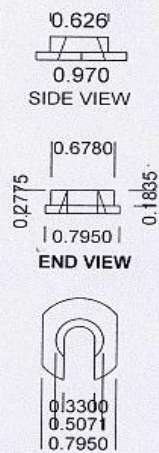
ORIGINAL '34 thru '48 VALVE ASSEMBLY

FORD '34 THRU '48 VALVES
VALVE PART # 11T 6505-A,B,C



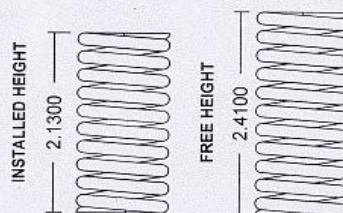
PASSENGER CARS THRU 1948-TRUCKS THRU 1947

'34 thru '48 KEEPERS (LOCKS)
PART # 40 6514

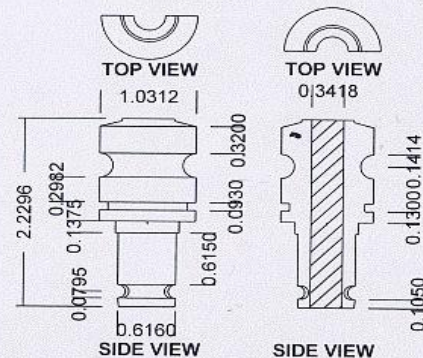


BOTTOM VIEW

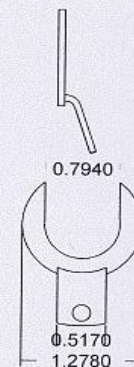
FORD VALVE SPRINGS
PART # 78 6513
1934-1948 ENGINES*
11.5 COILS
0.146" WIRE SIZE
2.410" FREE HEIGHT
37-40# S SEAT PRESSURE



FORD SPLIT VALVE GUIDES
1934-1948 ENGINES*
PART #40 6510-A,B,C
USE IN PAIRS



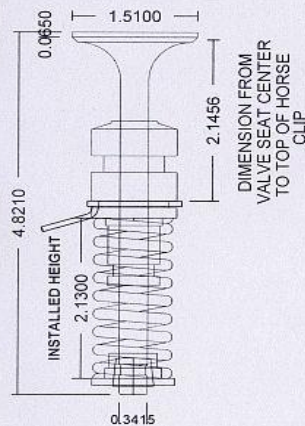
FORD HORSE SHOE
RETAINER
PART # 30 6512



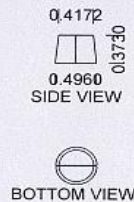
11/12/10 J.K.L.

ORIGINAL '49 thru '50 VALVE ASSEMBLY

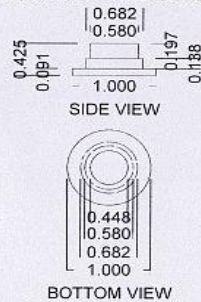
FORD STOCK VALVE
PART # 8BA 6505-A



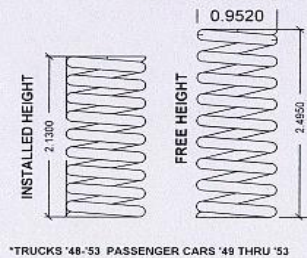
'49 THRU '53
VALVE KEEPERS (LOCKS)
PART # 7HA 6518



'49 THRU '50 SPRING RETAINER*
PART # 8BA 6514
*ALSO '48 LIGHT TRUCKS (8RT)

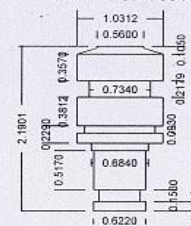


FORD VALVE SPRINGS
PART # 0BA 6513
1949-1950 ENGINES*
9.5 COILS
0.141" WIRE SIZE
37-40#S SEAT PRESSURE

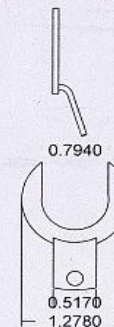


*TRUCKS '48-'53 PASSENGER CARS '49 THRU '53

'49 THRU '53 ONE PIECE GUIDE*
*ALSO '48 LIGHT TRUCKS (8RT)
PART # 8BA 6510

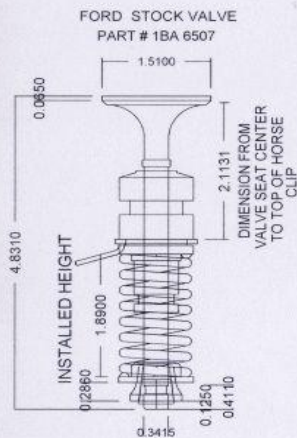


FORD HORSE SHOE
RETAINER
PART # 30 6512



11/12/10 J.K.L.

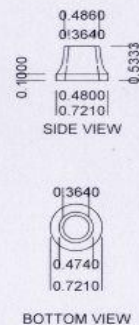
ORIGINAL '51 thru '53 VALVE ASSEMBLY



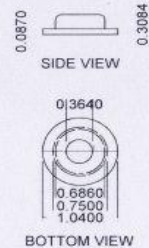
'49 THRU '53
KEEPERS (LOCKS)
PART # 7HA 6518



'51 THRU '53 SLEEVE (ROTATOR)
PART # 1BA 6517



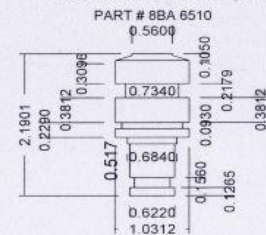
'51 THRU '53 SPRING RETAINER
PART # 1BA 6514-A



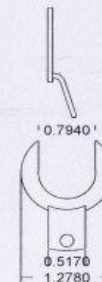
'51 THRU '53 VALVE SPRING
PART # 1BA 6513
8 COILS OF 0.140" WIRE



'49 THRU '53 ONE PIECE GUIDE*
*ALSO '48 LIGHT TRUCKS (8RT)



FORD HORSE SHOE
RETAINER
PART # 30 6512



11/12/10 J.K.L.